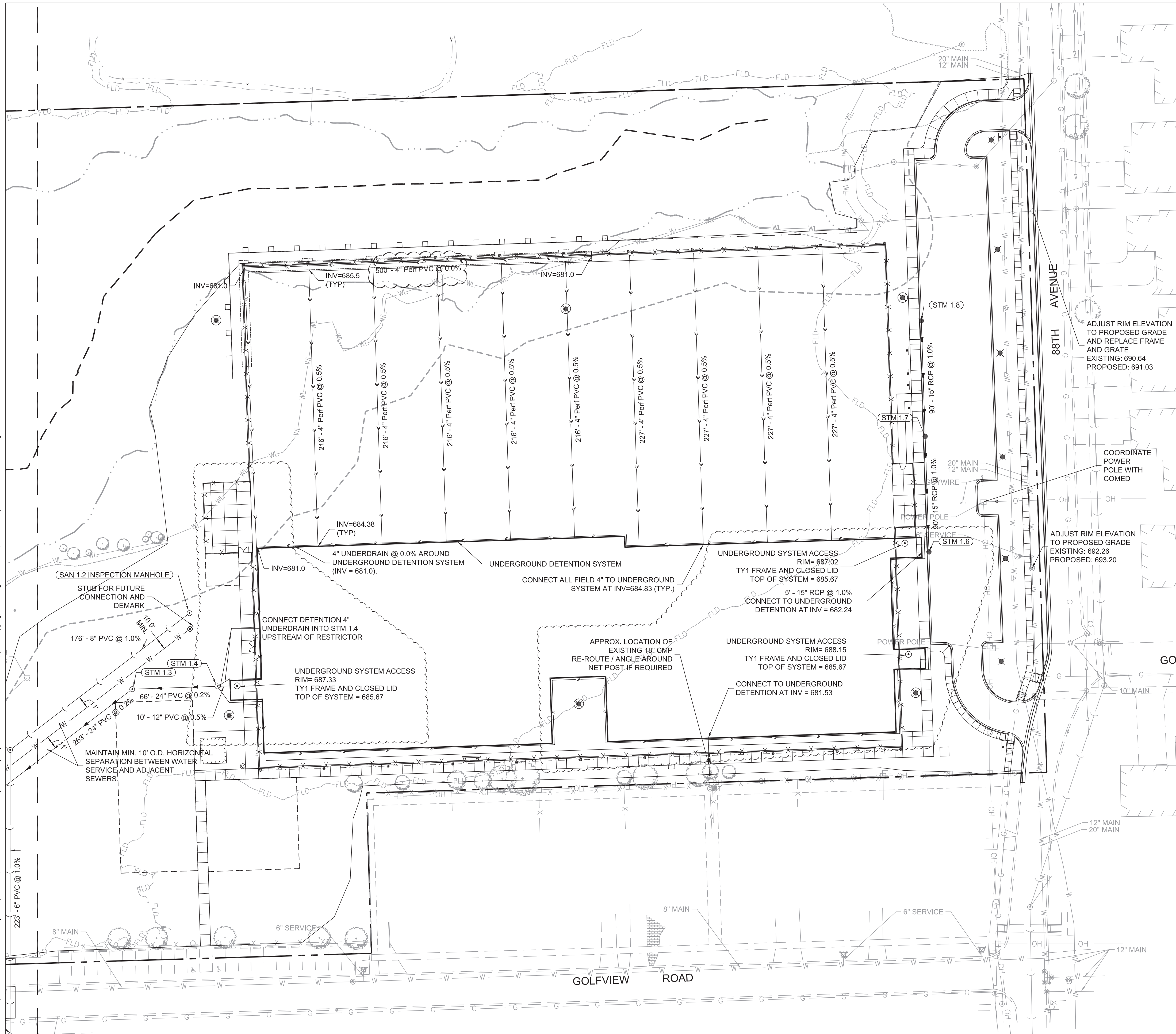
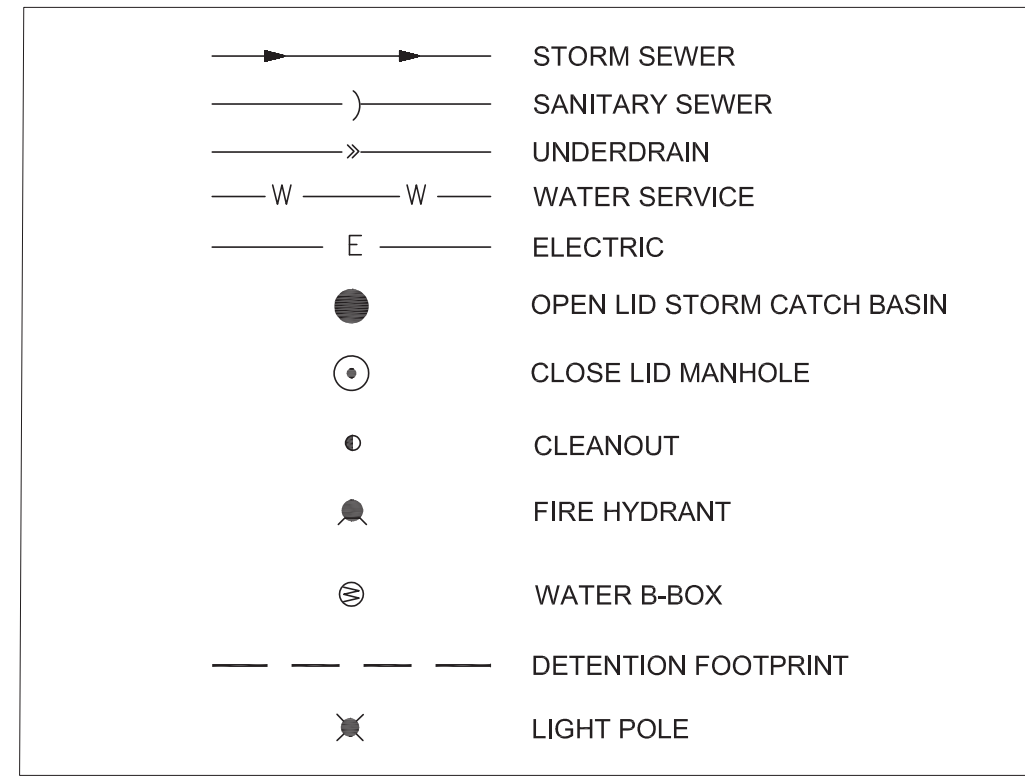


S:\Darlen\Orland Park, Village of\220069_Schussler Park\01\11 Drawings\02 CD\220069 C4.00 UTILITY PLAN.dwg kuck Apr 28, 2023 11:14:33 am
 Wight & Company
 All rights reserved. No part of these documents may be reproduced, stored, or transmitted in any form or by any means, electronic, mechanical, photocopying, recording or otherwise, without the prior written consent of Wight.



LEGEND



UTILITY NOTES:

- CONTRACTOR TO VERIFY ALL EXISTING UTILITY LOCATIONS, SIZES, SLOPES, INVERTS, ETC. AND CONTACT ENGINEER IMMEDIATELY IF THERE ARE ANY CONFLICTS/DISCREPANCIES.
- CONTRACTOR TO PROTECT ALL EXISTING UTILITIES.
- ALL EXISTING UTILITY STRUCTURES SHALL BE ADJUSTED AS NECESSARY TO MATCH FINISH GRADE. ALL EXISTING UTILITY STRUCTURES REQUIRING ADJUSTMENT OR RECONSTRUCTION SHALL BE COMPLETED BY THE CONTRACTOR TO THE SATISFACTION OF THE UTILITY OWNER. ADJUSTMENTS AND/OR RECONSTRUCTIONS NOT CALLED FOR ON THE PLANS SHALL BE CONSIDERED INCIDENTAL TO THE CONTRACT. NO MORE THAN A TOTAL OF 12 INCHES OF ADJUSTING RINGS AND/OR 2 ADJUSTING RINGS SHALL BE ALLOWED.
- CONTRACTOR TO COORDINATE ALL UTILITY CONNECTIONS AT THE BUILDING WITH THE MEP TO VERIFY CONNECTION LOCATION, PIPE SIZE, AND INVERT.
- CONTRACTOR TO SEE MEP PLANS FOR ALL DETAILS, LOCATION, ROUTING, SIZE, ETC. REGARDING GAS, TELEPHONE, ELECTRIC, AND LIGHTING DESIGN. FOLLOW ALL REQUIREMENTS OF UTILITY PROVIDERS.
- ALL STORM SEWER SHOULD BE PVC SDR 26 WATERMAIN QUALITY.
- ALL SANITARY SEWER SHALL BE WATERMAIN QUALITY PVC CONFORMING TO ASTM D-2241 WITH JOINTS OF ASTM D-3139.

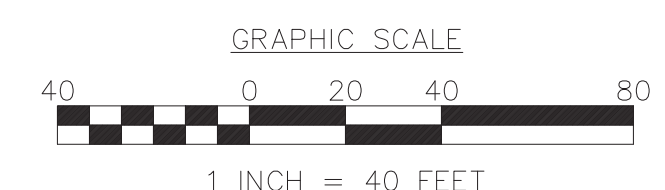
AS-BUILT NOTES:

THE CONTRACTOR IS RESPONSIBLE FOR ALL AS-BUILT SURVEYS. ALL AS-BUILT SURVEYS SHALL BE COMPLETED BY A PROFESSIONAL LAND SURVEYOR AND BE SIGNED AND SEALED. THE CONTRACTOR SHALL SUBMIT TWO SETS OF THE "AS-BUILT" FINAL ENGINEERING DRAWINGS (I.E. RECORD DRAWINGS) AND STORMWATER MANAGEMENT CALCULATIONS UPON COMPLETION OF IMPROVEMENTS AND INCLUDE ELECTRONIC CAD FILES. THE RECORD DRAWINGS SHOULD AT LEAST INCLUDE THE FOLLOWING INFORMATION: AS-BUILT DETENTION CONTOURS, ELEVATIONS (INCLUDING DETENTION BASIN TOP OF BERM AND OVERFLOW WEIR GRADES) AND VOLUME (VERIFIED, SIGNED, & SEALED BY A PROFESSIONAL ENGINEER (PE) OR PROFESSIONAL LAND SURVEYOR (PLS)); ELEVATION, AND LOCATION (TIES TO TWO POINTS) OF ALL NEW STRUCTURES INCLUDING FIRE HYDRANTS, VALVE BOXES AND VAULTS, LINES STOP SLEEVES, WATER SERVICE CORPORATION STOPS, WATER MAIN FITTINGS/BENDS, MANHOLES, SANITARY SERVICE WYES (MEASURED FROM DOWNSTREAM MANHOLE), ALL STORM/SANITARY SEWER STRUCTURES (INCLUDING INVERTS AND PIPE SIZES), ALL PIPES (LOCATIONS, SLOPES, LENGTHS, ETC.), OUTLET CONTROL STRUCTURES (INCLUDING RESTRICTOR SIZES AND ELEVATIONS PLUS TOP OF WALL) AND ABANDONED WATER OR SANITARY SERVICE LINES. DETAILED TOPOGRAPHIC SURVEY OF ALL HIGH POINTS, LOW POINTS, CHANGE OF SLOPE INCLUDING GUTTER GRADES, TOP OF CURB GRADES, PAVEMENT GRADES, SIDEWALK GRADES, RAMP GRADES, ETC. TO VERIFY POSITIVE DRAINAGE. ALL ELEVATIONS SHOULD BE REFERENCED TO THE SAME BENCHMARK DATUM AS THE ORIGINAL DESIGN PLANS. HORIZONTAL TIES SHALL BE REFERENCED TO LOT LINES, BACK OF CURB, OR PROPERTY CORNERS. WITHIN DETENTION/BMP AREAS: FOR VERIFICATION OF DETENTION VOLUME AND SUBBASE GRADES, PRIOR TO BACK FILLING WITH CA-7, THE CONTRACTOR SHALL PROVIDE ENGINEER WITH A CERTIFIED TOPO SURVEY OF AS-BUILT SUBBASE GRADES FOR ENGINEER APPROVAL AND ALSO A COPY OF RECEIPT OF THE CA-7 AGGREGATE.

SANITARY SEWER NOTES

- THE CONTRACTOR SHALL TAKE MEASURES TO PREVENT ANY POLLUTED WATER, SUCH AS GROUND AND SURFACE WATER, FROM ENTERING THE EXISTING SANITARY SEWERS.
- A WATER-TIGHT PLUG SHALL BE INSTALLED IN THE DOWNSTREAM SEWER PIPE AT THE POINT OF SEWER CONNECTION PRIOR TO COMMENCING ANY SEWER CONSTRUCTION. THE PLUG SHALL REMAIN IN PLACE UNTIL REMOVAL IS AUTHORIZED BY THE MUNICIPALITY AND/OR MWRD AFTER THE SEWERS HAVE BEEN TESTED AND ACCEPTED.
- DISCHARGING ANY UNPOLLUTED WATER INTO THE SANITARY SEWER SYSTEM FOR THE PURPOSE OF SEWER FLUSHING OF LINES FOR THE DEFLECTION TEST SHALL BE PROHIBITED WITHOUT PRIOR APPROVAL FROM THE MUNICIPALITY OR MWRD.
- ALL SANITARY SEWER CONSTRUCTION SHALL BE IN ACCORDANCE WITH THE STANDARD SPECIFICATIONS FOR WATER AND SEWER MAIN CONSTRUCTION IN ILLINOIS (LATEST EDITION).
- ALL FLOOR DRAINS SHALL DISCHARGE TO THE SANITARY SEWER SYSTEM.
- ALL DOWNSPOUTS AND FOOTING DRAINS SHALL DISCHARGE TO THE STORM SEWER SYSTEM.
- ALL SANITARY SEWER PIPE MATERIALS AND JOINTS (AND STORM SEWER PIPE MATERIALS AND JOINTS IN A COMBINED SEWER AREA) SHALL CONFORM TO THE FOLLOWING:

PIPE MATERIAL	PIPE SPECIFICATIONS	JOINT SPECIFICATIONS
VITRIFIED CLAY PIPE	ASTM C-700	ASTM C-425
REINFORCED CONCRETE SEWER PIPE	ASTM C-76	ASTM C-443
CAST IRON SOIL PIPE	ASTM A-74	ASTM C-564
DUCTILE IRON PIPE	ANSI A21.51	ANSI A21.11
POLYVINYL CHLORIDE (PVC) PIPE 6-INCH TO 15-INCH DIAMETER SDR 26 18-INCH TO 27-INCH DIAMETER F-DY=46	ASTM D-3034 ASTM F-679	ASTM D-3212 ASTM D-3212
HIGH DENSITY POLYETHYLENE (HDPE)	ASTM D-3350 ASTM D-3035	ASTM D-3261, F-2620 (HEAT FUSION) ASTM D-3212, F-477 (GASKETED)
WATER MAIN QUALITY PVC 4-INCH TO 36-INCH 4-INCH TO 12-INCH 14-INCH TO 48-INCH	ASTM D-2241 AWWA C900 AWWA C905	ASTM D-3139 ASTM D-3139 ASTM D-3139



Wight & Company
 wightco.com
 2500 North Frontage Road
 Darien, IL 60561
 P 630.969.7000
 F 630.969.7979

REV	DESCRIPTION	DATE
	ADDENDUM 7	4-28-2023
	ISSUE FOR BID	4-11-2023
	Plan Commission Resub #1	1-18-2023
	MWRD SUBMITTAL	12-22-2022
	ISSUED FOR PLANNING	11-18-2022

SCHUSSLER PARK

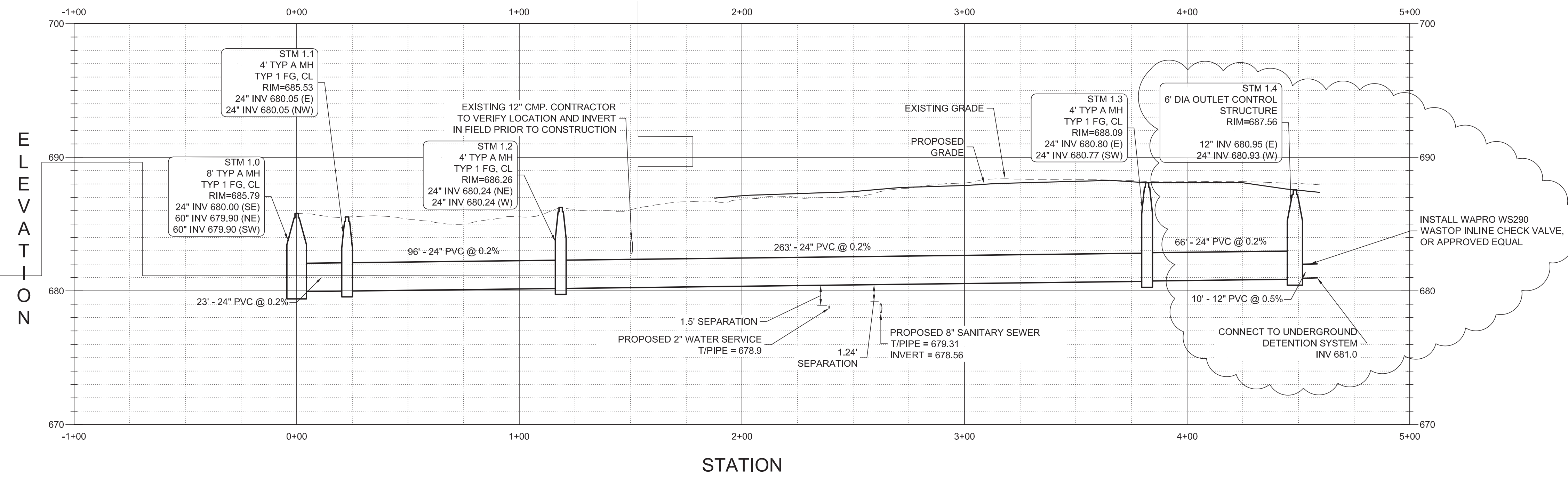
14609 POPLAR ROAD
 ORLAND PARK, IL 60462

UTILITY PLAN - EAST

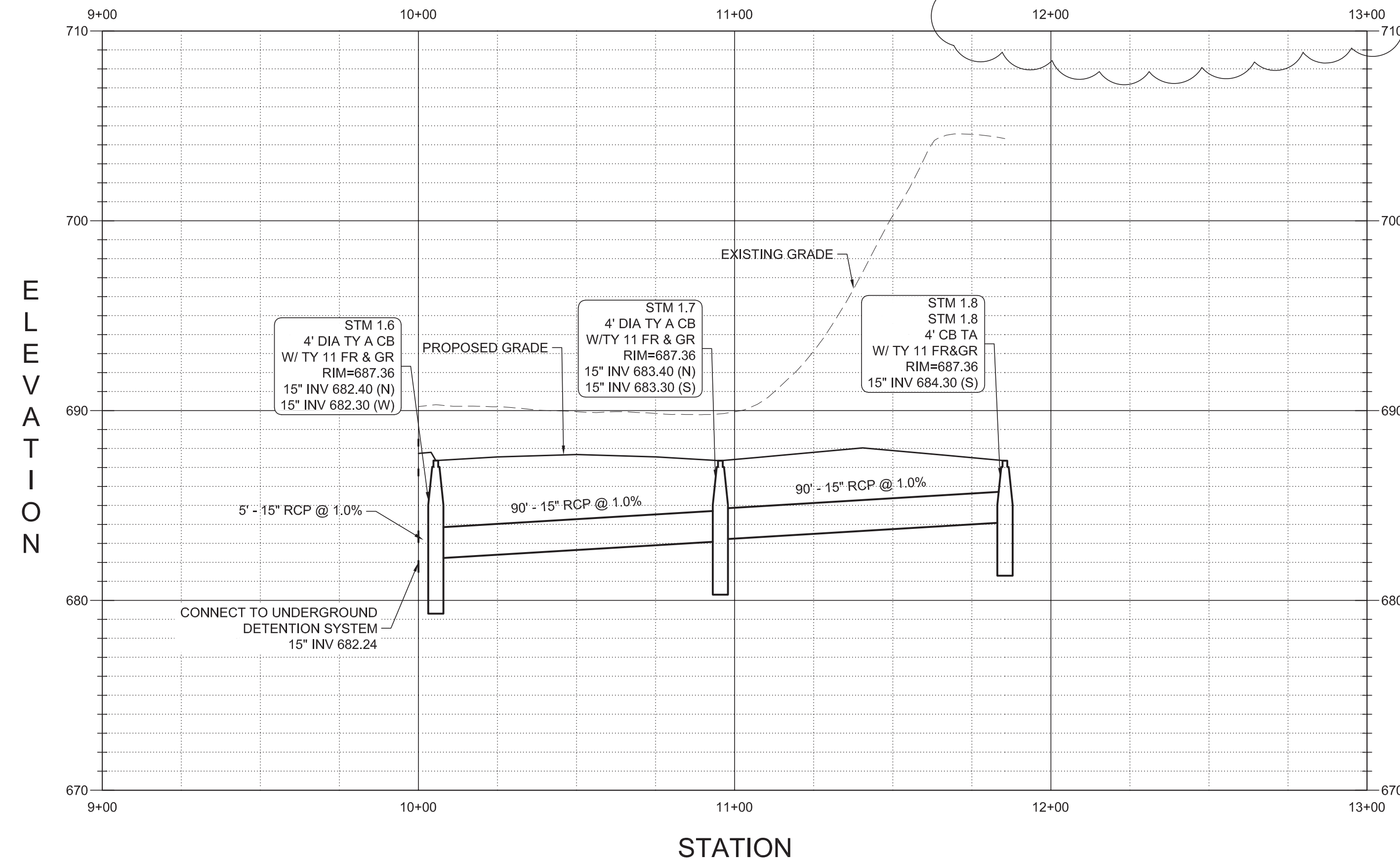
Project Number: 220069
 Drawn By: XX
 Sheet:

C4.01

DETENTION CHAMBER OVERFLOW STORM SEWER PIPE PROFILE



PARKING LOT STORM SEWER PIPE PROFILE



S:\Darien\Orland Park, Village of\220069_Schussler Park\01\11 Drawings\02 CD\220069 C4.10 UTILITY PROFILE.dwg kbuck Apr 28, 2023 11:28:08 am
Wight & Company All rights reserved. No part of these documents may be reproduced, stored, or transmitted in any form or by any means, electronic, mechanical, photocopying, recording or otherwise, without the prior written consent of Wight.



Wight & Company
wightco.com
2500 North Frontage Road
Darien, IL 60561
P 630.969.7000
F 630.969.7979

ADDENDUM 7	4-28-2023	
ISSUE FOR BID	4-11-2023	
Plan Commission Resub #1	1-18-2023	
MWRD SUBMITTAL	12-22-2022	
ISSUED FOR PLANNING	11-18-2022	
REV	DESCRIPTION	DATE

SCHUSSLER PARK

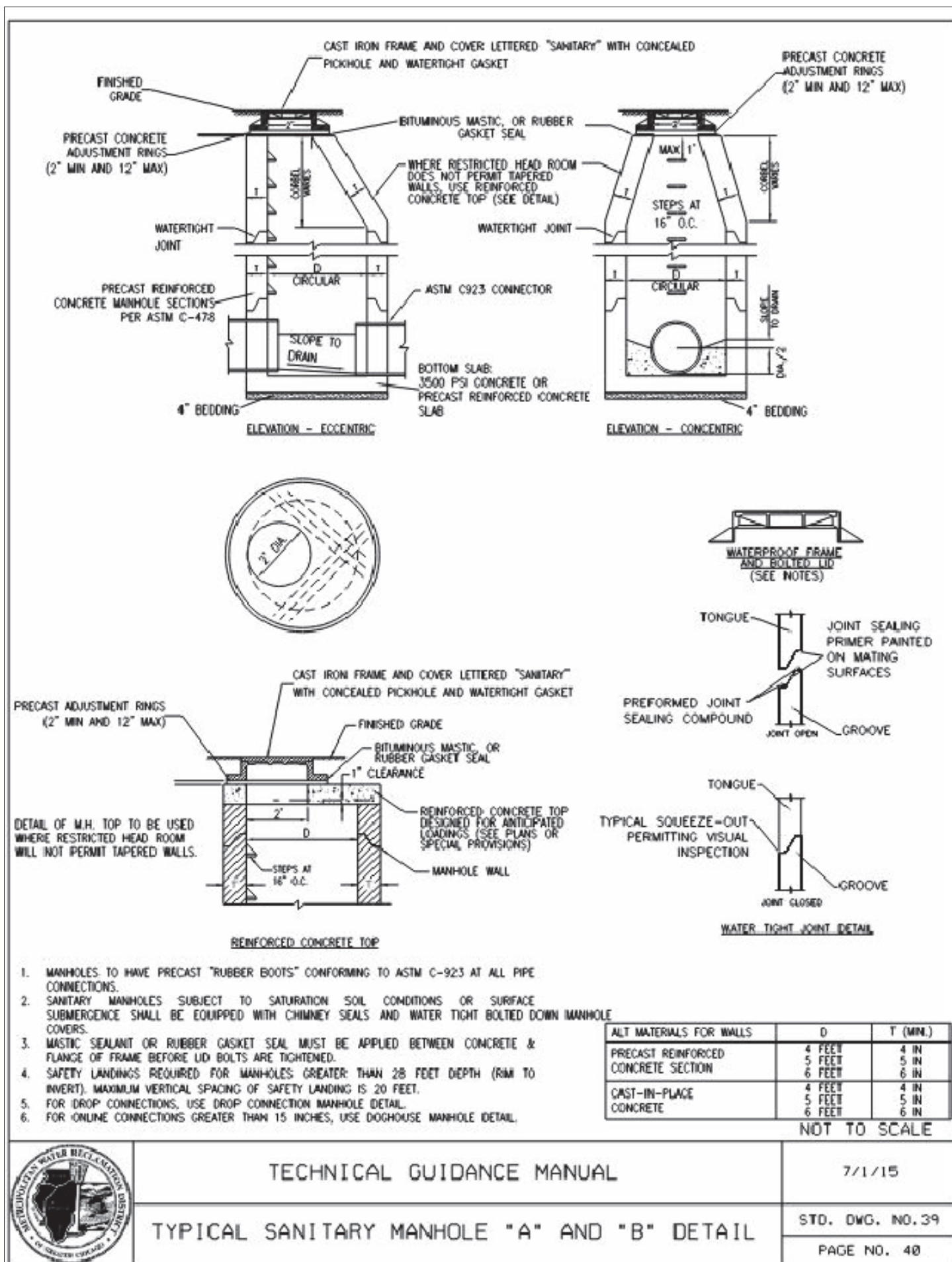
14609 POPLAR ROAD
ORLAND PARK, IL 60462

UTILITY PROFILES

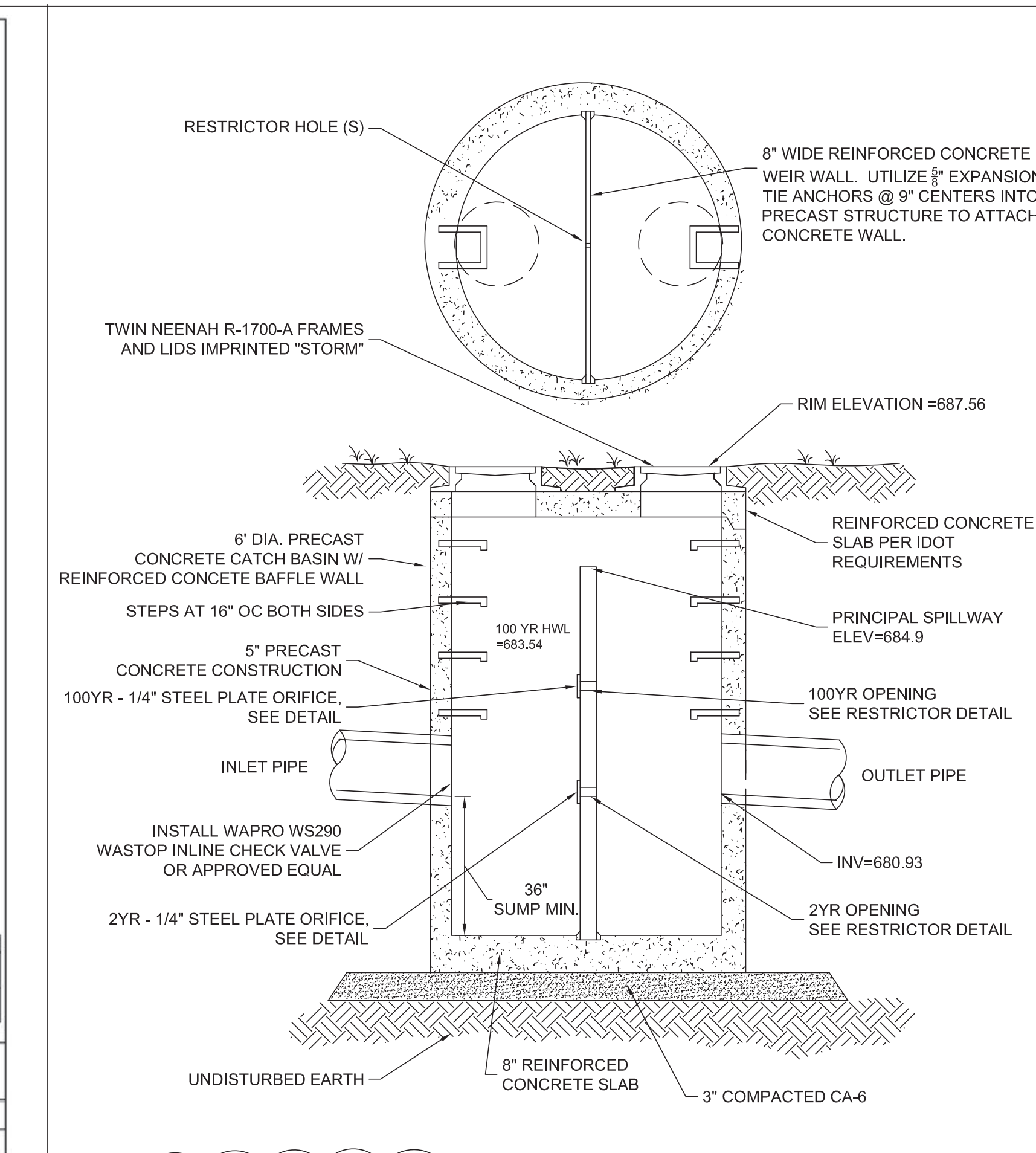
Project Number: 220069
Scale:
Drawn By: NKH
Sheet:

HORIZONTAL SCALE: 1"=30'
VERTICAL SCALE: 1"=5'

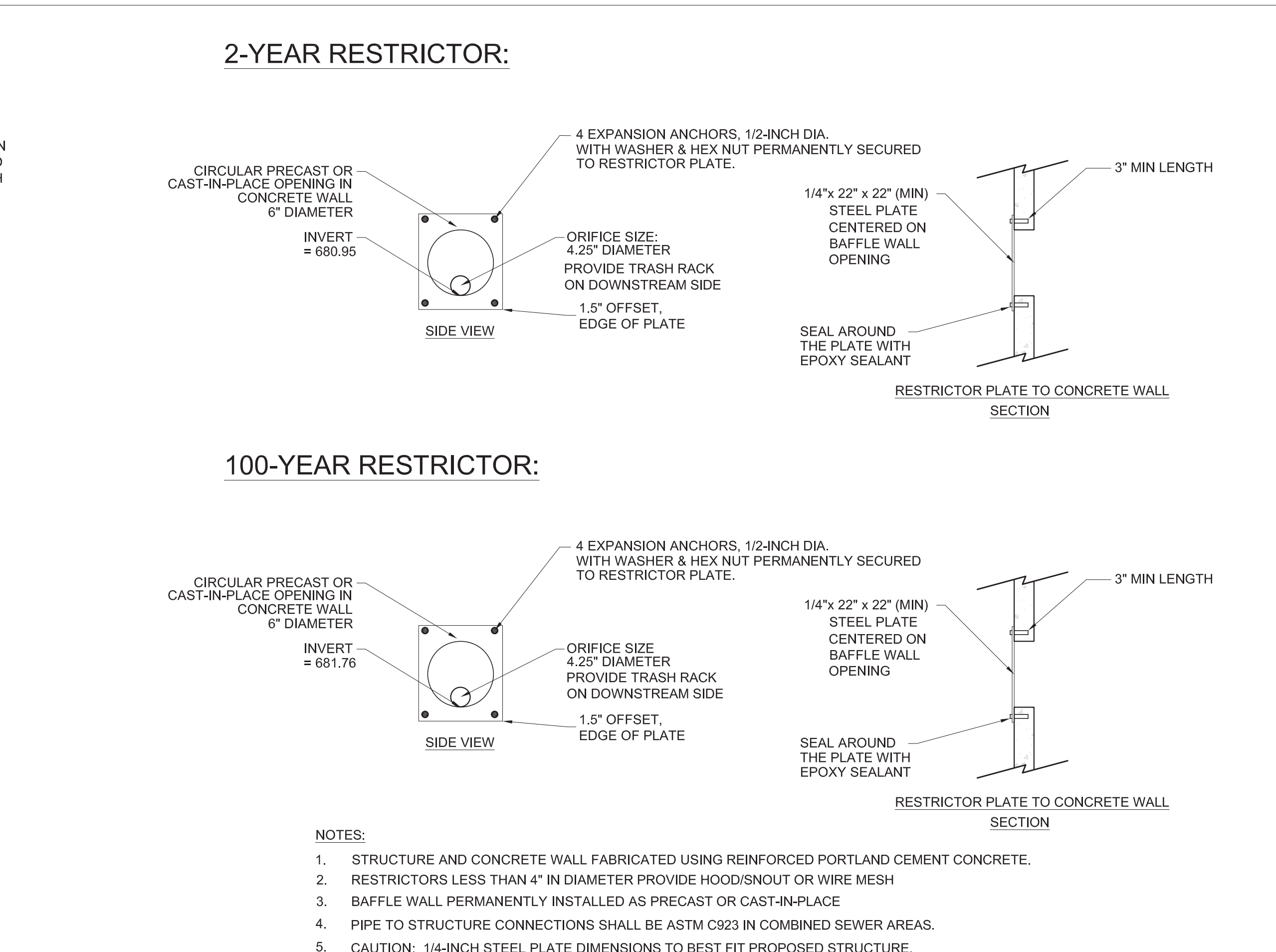
C4.11



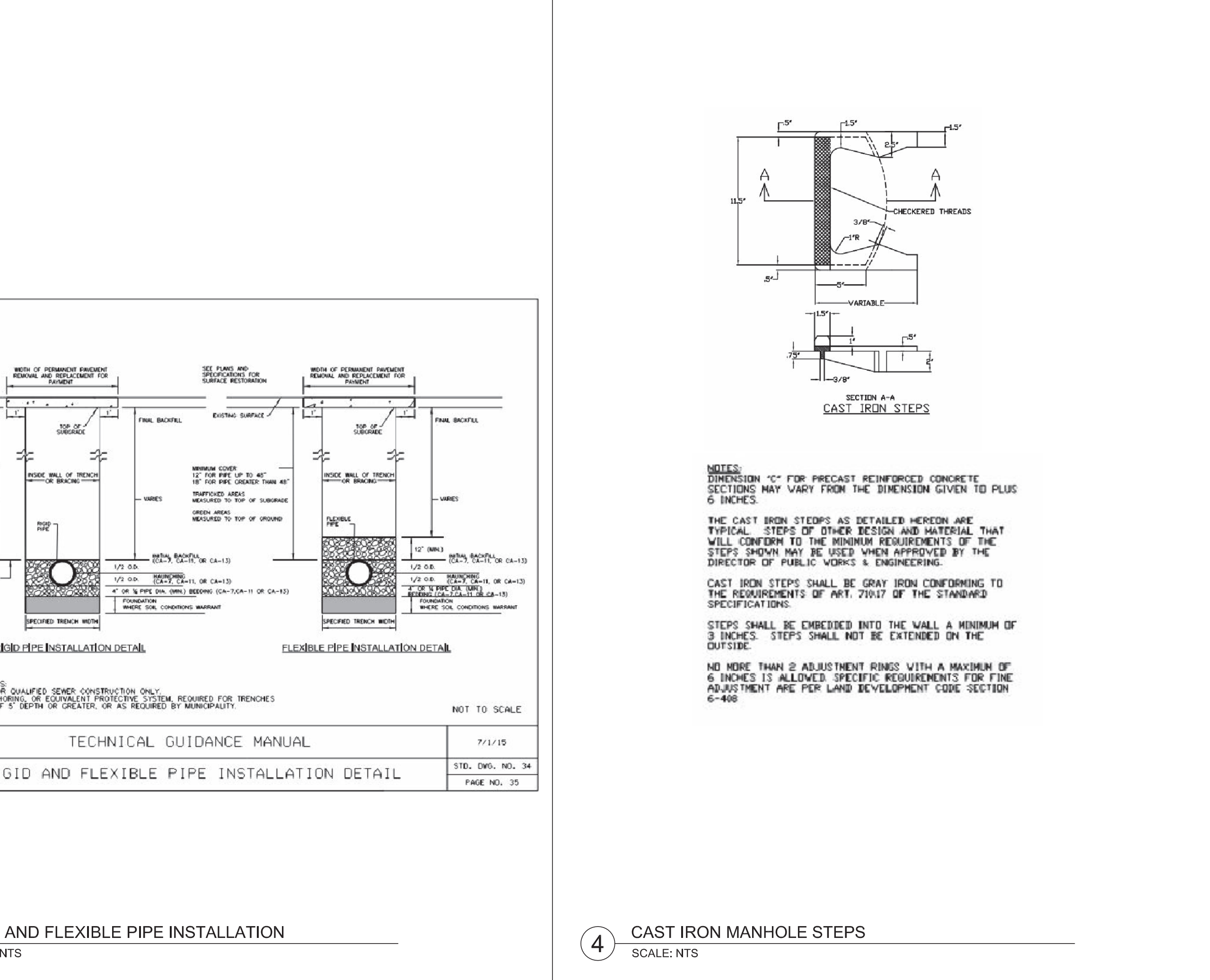
1 MWRD SANITARY SEWER MANHOLE
 SCALE: NTS



2 OUTLET CONTROL STRUCTURE
 SCALE: NTS



3 RIGID AND FLEXIBLE PIPE INSTALLATION
 SCALE: NTS



4 CAST IRON MANHOLE STEPS
 SCALE: NTS

ORLAND PARK

Wight

Wight & Company
 wightco.com
 2500 North Frontage Road
 Darien, IL 60561
 P 630.969.7000
 F 630.969.7979

ADDENDUM 7	4-28-2023	
ISSUE FOR BID	4-11-2023	
Plan Commission Resub #1	1-18-2023	
MWRD SUBMITTAL	12-22-2022	
ISSUED FOR PLANNING	11-18-2022	
REV	DESCRIPTION	DATE

SCHUSSLER PARK

14609 POPLAR ROAD
 ORLAND PARK, IL 60462

CIVIL DETAILS

Project Number: 220069
 Scale: as noted
 Drawn By: KB/DW
 Sheet:

C5.03