



SMITHGROUP
35 EAST WACKER
SUITE 900
CHICAGO, IL 60601
312.641.0770
www.smithgroup.com

HPZS
314 W INSTITUTE PL
SUITE 1E
CHICAGO, IL 60610
312.944.9600
www.hpzs.com

ISSUED FOR _____ REV DATE _____

ISSUE FOR BID 1 04/11/2024

SEALS AND SIGNATURES

KEY PLAN

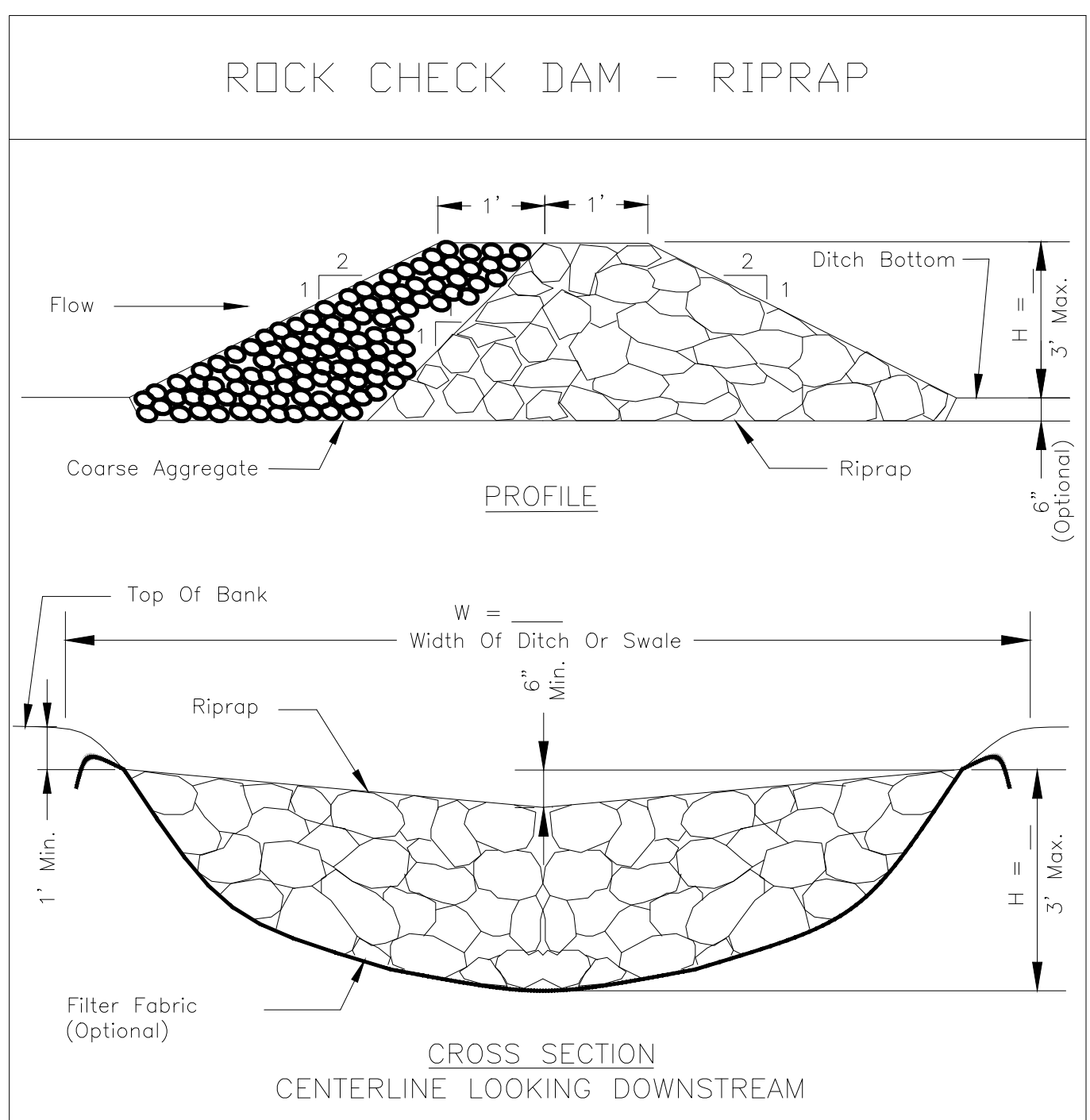
DRAWING TITLE
UTILITY DETAILS

SCALE: _____

PROJECT NUMBER 14106

CU-506
DRAWING NUMBER

CALL J.U.I.E.
1-800-892-0123
48 Hours (2 working days) Before You Dig.



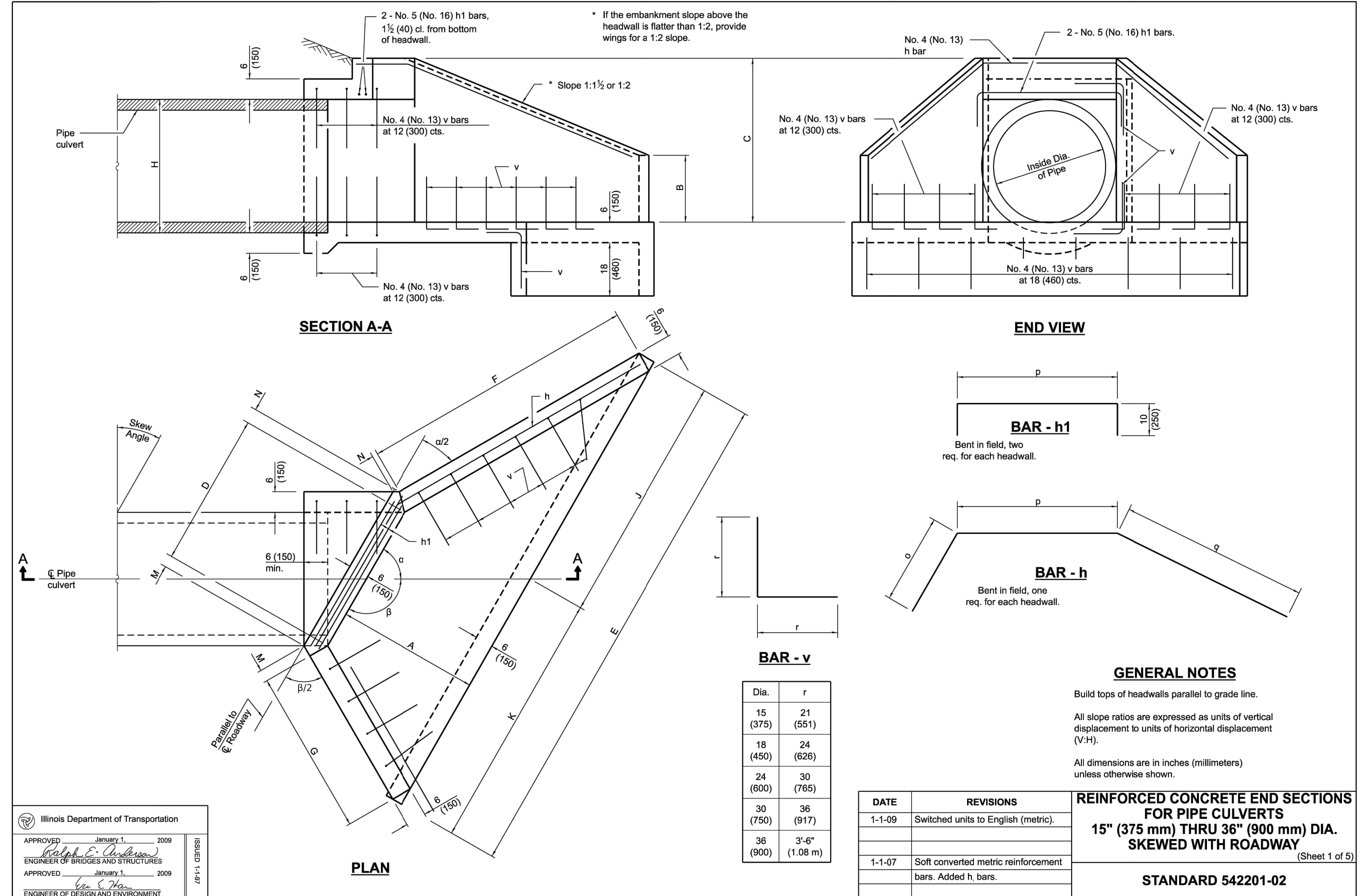
NOTES:
1. Filter fabric shall meet the requirements of material specification 592 GEOTEXTILE, Table 1 or 2, Class I, II, or IV and shall be placed over the cleared area prior to the placing of rock.
2. Coarse aggregate shall meet one of the following IDOT gradations, CA-1, CA-2, CA-3, or CA-4.
3. Riprap shall meet IDOT gradation RR-3 or RR-4 and meet Quality Designation A.
4. Coarse aggregate and riprap shall be placed according to construction specification 25 ROCKFILL using placement Method 1 and Class III compaction.
5. For added stability, the base of the dam may be keyed 6 inches into the soil.
6. See plans for spacing of dams and H dimensions.
7. Maximum drainage area to each dam is 10 acres.
8. ROCK CHECK DAM-COARSE AGGREGATE IL-605CA may be used for drainage areas under 2 acres.

REFERENCE: Project _____ Date _____
Designed _____ Date _____
Checked _____ Date _____
Approved _____ Date _____

NRCS
Natural Resources Conservation Service

STANDARD DWG. NO.
IL-605R
SHEET 1 OF 1
DATE 1-29-99

1 ROCK CHECK DAM NTS



2 REINFORCED CONCRETE END SECTIONS FOR PIPE CULVERTS SCALE: 1" = 1'-0"

WINGS FOR 1:2 SLOPE

Skew Angle	Design No.	Nominal Pipe Dia.	DIMENSIONS FOR CONCRETE													Concrete 2 End Sections (sq. yd)	Reinf. Bars - 2 End Sections (sq. ft)										v-bars No.	Bars for 2 End Sections (sq. ft)
			A	B	C	D	E	F	G	H	J	K	M	N	o		p	q	r	s	t	u	v					
35°	DS 18-2	15	38	10	29	23 1/2	10'-4"	6'-10 1/2"	3'-8 3/4"	19	5'-0 5/8"	5'-3 1/2"	3 1/2	1 1/2	65'	2.4	3'-11"	26	6'-11"	13'-0"	26	3'-10"	44	140				

REINFORCED CONCRETE END SECTIONS FOR PIPE CULVERTS
15" (375 mm) THRU 36" (900 mm) DIA. SKEWED WITH ROADWAY (Sheet 2 of 5)
STANDARD 542201-02

SCALE: 1" = 1'-0"

3 REINFORCED CONCRETE END SECTIONS FOR PIPE CULVERTS

FILE C:\Users\kvaresha\OneDrive\Desktop\SmithGroup - Composites Inc\189 - 14106 - Elgin Sports Complex\CU-506.dwg SmithGroup - Composites Inc\189 - 14106 - Elgin Sports Complex\CU-506.dwg DATE: 04/11/2024 TIME: 10:31 AM

